

This material is neither intended to be distributed to Mainland China investors nor to provide securities investment consultancy services within the territory of Mainland China. This material or any portion hereof may not be reprinted, sold or redistributed without the written consent of J.P. Morgan.

## Flows & Liquidity

Updated bond demand and supply for H2

- Our updated bond demand/supply analysis points to a net improvement in bond demand in 2024 vs. 2023 of around \$0.5tr, largely due to an improvement in retail bond demand as well as some improvement in G4 commercial bank and foreign official demand.
- Combined with an increase in net supply of \$0.8tr, our framework now implies a more modest deterioration in the supply-demand balance of \$0.4tr vs. \$0.6tr previously.
- This would imply upward pressure on Global Agg yields of around 25bp-30bp for the whole year compared to a YTD rise of around 40bp.
- In other words, our updated bond demand/supply analysis implies around 10-15bp decline in global bond yields between now and year-end.
- The Q1 2024 bond fund inflow globally was the highest since data began in 2006.
- Balanced/Mixed funds, a category that includes the so called 60:40 funds and other multi asset funds, continues to bleed with another \$60bn of outflows in Q1 2024.
- Of the \$8.33bn that MicroStrategy spent cumulatively since inception to acquire bitcoins, \$3.4bn or 40% was spent over the past three quarters alone.

- As we pass the mid-year mark and the focus shifts to the second half, we revisit our estimate of the global bond supply/demand balance. This incorporates updated projections for net bond demand from key global bond investors, as well as updates supply estimates for 2024 from 2H24 outlooks. Turning first to demand, after quite sharp deteriorations in net bond demand from G4 central banks in recent years, the overall deterioration in 2024 vs. 2023 is set to be markedly more modest. The reduction in the Fed's monthly QT pace of UST runoff being cut to \$25bn from \$60bn, a modestly larger cut than the \$30bn/m we had expected, is set to be largely offset by the shift from the ECB to partial reinvestment of maturing PEPP holdings in 2H24, as well as the BoJ shifting to QT. Indeed, Governor Ueda indicated that it would prefer a 'predictable' approach to QT and that reductions would be 'sizeable', but will release further details after consultations with market participants at the July meeting and we assume a relatively gradual shift to QT by the BoJ outlined by our Japan rates strategists ([Japan Fixed Income Markets Weekly](#), Jun 28th). Overall, we project net bond sales by G4 central banks of around \$1.3tr in 2024 (Figure 1), or a decline of around \$240bn vs. 2023.

### See page 23 for analyst certification and important disclosures.

J.P. Morgan does and seeks to do business with companies covered in its research reports. As a result, investors should be aware that the firm may have a conflict of interest that could affect the objectivity of this report. Investors should consider this report as only a single factor in making their investment decision.

### Global Markets Strategy

#### Nikolaos Panigirtzoglou <sup>AC</sup>

(44-20) 7134-7815  
nikolaos.panigirtzoglou@jpmorgan.com  
J.P. Morgan Securities plc

#### Mika Inkinen

(44-20) 7742 6565  
mika.j.inkinen@jpmorgan.com  
J.P. Morgan Securities plc

#### Mayur Yeole

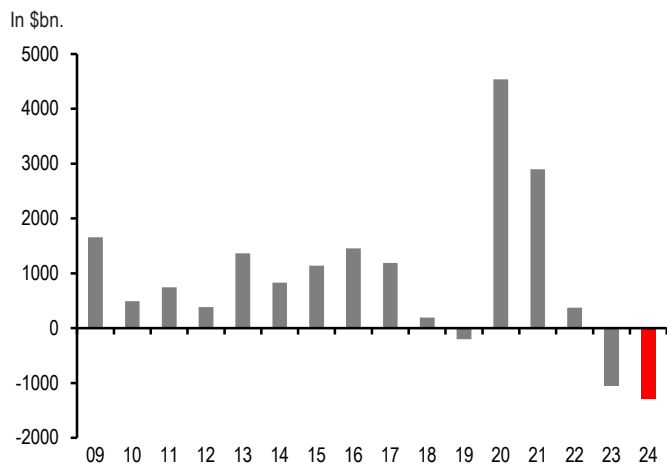
(91 22) 6157 3872  
mayur.yeole@jpmchase.com  
J.P. Morgan India Private Limited

#### Krutik P Mehta

(91-22) 6157-5016  
krutik.mehta@jpmchase.com  
J.P. Morgan India Private Limited



Figure 1: Net QE by G4 central banks



Source: J.P. Morgan.

- For G4 commercial banks, 2023 had seen a modest improvement in net demand of around \$100bn vs. 2022 as significant net sales from US commercial banks were offset by net purchases from other G4 commercial banks, particularly Euro area banks. In 2024 to-date, there has been a notable pickup with around \$430bn of net purchases. This includes a notable increase in bond holdings from US banks in 1Q24, with the US flow of funds showing around \$185bn of net purchases. However, we are reluctant to project this strength going forward given that in 2Q24 we estimate net sales of around \$20bn based on the Fed H.8 release with weekly changes in bond holdings adjusted for our proxy for net unrealised gains. In addition, the share of US banks' holdings of debt securities as a share of total assets remains elevated (Figure 2). And while the FDIC's Quarterly Banking profile for 1Q24 shows that there has been some reduction in unrealised losses that stood at over \$680bn in 3Q24, they still remain elevated at just under \$520bn (Figure 3).

Figure 2: US and Euro area banks' holdings of bonds as a share of total assets



Source: Federal Reserve, ECB, J.P. Morgan.

Figure 3: FDIC-insured institutions' unrealised gains (losses) on investment securities



Source: FDIC.

- At the same time, the pickup in demand from euro area banks has seen the share of bonds as a % of total assets increase to a level close to its end-2019 level, though it remains some way below its pre-2019 average. Much of the TLTROs outstanding at the start of the year have now matured or been pre-paid, with around \$80bn outstanding, and together with QT reserves look set to contract by around \$290bn. As we have argued previously, given the ongoing contraction in reserves we see banks increasing their bond holdings at least in part to ensure that they have sufficient high quality liquid assets for regulatory purposes. That said, the 2H24 decline in reserves looks set to be somewhat slower than the 1H24 decline, suggesting a somewhat more modest pace of net demand for Euro area banks. Taking the above, we project an improvement in bond demand from G4 commercial banks of around \$350bn in 2024 vs. 2023, compared to our previous projection of around \$200bn.

03 July 2024

- What about retail investors? 2023 saw a normalisation in bond fund demand to net purchases of around \$630bn, modestly above its average for the past decade, after net outflows in 2022 (Chart A1 in the Appendix). The net inflow YTD, however, has been elevated, with 1Q24 in particular seeing the strongest quarter of net inflows since at least 2006. 2Q24 has seen net inflows more in line with its average for 2023, and projecting the 2Q24 pace forward suggests overall net inflows into bond funds for 2024 of around \$830bn. This represents an improvement in demand of around \$200bn in 2024 vs. 2023, compared to our previous projection of unchanged flat demand.
- What about foreign official demand? The recently released IMF COFER data for 1Q24, where we adjust changes in reserve balances by currency for both currency and bond returns (using our 1-5y GBI country indices), suggest that reserves managers saw net inflows of just under \$150bn (Figure 4). For 2Q24, we use a more timely proxy of net reserves accumulation for EM based on monthly or weekly disclosures of FX reserves. Similar to the COFER data, we adjust changes in FX reserves for bond and currency returns, assuming for simplicity that reserves are distributed roughly 60:40 in USD and non-USD currencies, broadly in line with the distribution in the COFER data, and proxy non-USD currencies with DXY returns and DXY weighted bond returns. This proxy suggests a sharp slowdown in reserve accumulation in 2Q, and given the marked volatility in quarter-to-quarter flows that have since end-2021 averaged zero we are reluctant to project the strength in 1Q24 flows. At the same time, net bond sales of \$100bn in 2023 look less likely to be repeated, and we project an improvement in net bond demand from reserve managers of \$150bn in 2024 vs. 2023.

Figure 4: Quarterly flows by FX Reserve Managers

In \$bn per quarter. Based on COFER data adjusted for both bond and FX returns. Last obs. is for 1Q24.



Source: IMF COFER, J.P. Morgan.

- What about G4 pension funds and insurance companies? In 2023, we now estimate they bought around \$620bn of bonds based on the flow of funds. Previously, we had estimated based on the strength in 1H24 and 3Q24 data that G4 pension funds that 2023 net bond demand would be markedly stronger at \$880bn, but a softer 4Q pace and revisions mean that net purchases came in markedly weaker. Given the improvement in the funded status of defined benefit pension funds amid strength in equity markets and still high yields suggests that there remains an incentive to lock in these gains, but also recognising that these rebalancing flows have taken longer to materialise than we have expected, we project a similar modestly above average demand for 2024. In other words, we now project unchanged bond demand in 2024 vs. 2023, vs. a deterioration of around \$150bn previously.
- Turning to supply, our colleagues in US rates strategy have revised higher their net issuance forecasts, and similar to the previous revisions earlier this year the upward revisions were primarily due to ongoing strength in corporate issuance. In addition, we now see higher HG net supply and modestly higher government supply in Europe. Taking on board these net issuance revisions across govt and spread products, Figure 5 shows our updated projections for global bond net supply. We now project an increase in net issuance in 2024 vs. 2023 of around \$0.8tr compared to close to around \$0.4tr previously and close to flat back in Nov23 (F&L, Nov 23rd).

Figure 5: Net global bond supply

\$bn per annum.



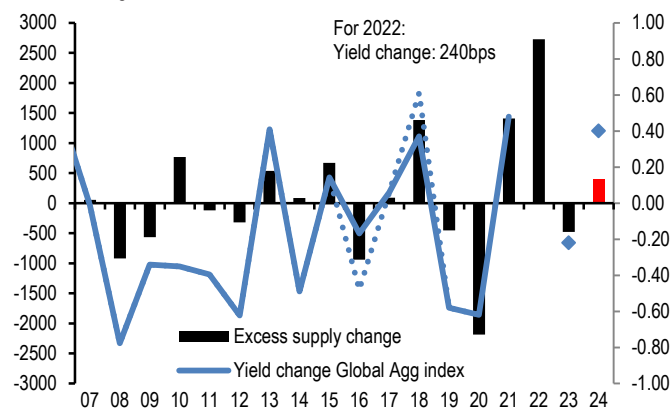
Source: J.P. Morgan.

- Putting it all together, we now project an improvement in bond demand in 2024 vs. 2023 of around \$0.5tr, compared to a deterioration of around \$0.3tr previously. With bond supply now around \$0.8tr higher in 2024 vs. 2023, compared to \$0.4tr previously, this now implies a deterioro-

ration in the global bond supply-demand balance of around \$0.4tr vs. around \$0.6tr previously (Figure 6). Based on the relationship between annual changes in excess supply and the changes in the Global Agg index yield would imply upward pressure on Global Agg yields of around 25bp-30bp for the whole year compared to a YTD change of around 40bp. In other words, our updated bond demand/supply analysis implies around 10bp-15bp decline in global bond yields between now and year end.

**Figure 6: Annual change in the balance between global bond supply and demand**

Change in excess bond supply in \$bn per annum in the left axis calculated as the difference between changes in global bond supply and changes in global bond demand as explained in the text. It includes our 2024 estimates. Right axis shows the annual change of the yield on the Bloomberg Global Agg index in % (Jan-Oct in dotted lines for 2016 and 2018), and the blue diamonds shows change for 2023 and the YTD change in 2024.



Source: J.P. Morgan.

**The Q1 2024 bond fund inflow globally was the highest since data began in 2006. Balanced/Mixed funds, a category that includes the so called 60:40 funds and other multi asset funds, continues to bleed with another \$60bn of outflows in Q1 2024.**

- The Q1 quarterly worldwide fund flow data released by ICI last week revealed a much stronger inflow into both bond and equity funds in the first quarter of the year than previously suggested by monthly and weekly flow data (Figure 7). In particular, the Q1 2024 bond fund inflow at \$359bn was the strongest since worldwide bond fund flow data began in 2006.
- And the equity fund flow for Q1 2024 was almost as strong as that seen in Q4 2023, suggesting that the retail impulse into equities was strong for two straight quarters. The \$190bn per quarter pace of equity fund flows during Q4 2023 and Q1 2024 represents the strongest equity fund

buying since 2021.

- Fund flow data from monthly and weekly reporting funds point to some slowing in both equity and bond fund flows in Q2 as shown in Figure 7, but there clearly is a risk upward revisions in the Q2 fund flows of Figure 7 once quarterly reporting flow data become available in about three months.

**Figure 7: Quarterly equity & bond fund flows globally**

\$bn per quarter of Net Sales, i.e. includes net new sales + reinvested dividends for Mutual Funds and ETFs globally, i.e. for funds domiciled both inside and outside the US. Data come from ICI (worldwide data up to Q1'24). Data for Q2 2024 are a combination of monthly and weekly data from Lipper, EPFR and ETF flows from Bloomberg Finance L.P.



Source: ICI, EPFR, Lipper, Bloomberg Finance L.P., J.P. Morgan.

- What has been also striking within the Q1 worldwide fund flow data is the persistency of the outflows from Balanced/Mixed funds despite all other categories (Equity, Bond and Money Market Funds) seeing strong inflows. Balanced/Mixed funds, a category that includes the so called 60:40 funds and other multi asset funds, lost another \$60bn in Q1 2024, the eight consecutive quarter of large outflows (Figure 8). As we argued before in our publication, the structural shift in bond/equity correlation to positive territory since 2022 (Figure 9) appears to have inflicted a structural damage to Balanced/Mixed funds, the case for these funds has diminished in investors' minds. Instead of Balanced/Mixed funds, investors have been preferring to buy funds focused on individual asset classes, i.e. Equity, Bond and Money Market Funds over the past two years. In addition, investors may prefer funds focused on individual asset classes it may give them more flexibility, e.g. if they want to avoid negative carry in government bond funds they can direct flows into funds that focus on spread products. As a result of outflows, the AUM of Balanced/Mixed funds has declined to its lowest share since 2013 as percentage of the AUM of all funds (Figure 10).

03 July 2024

**Figure 8: Quarterly Balanced/Mixed fund flows worldwide**

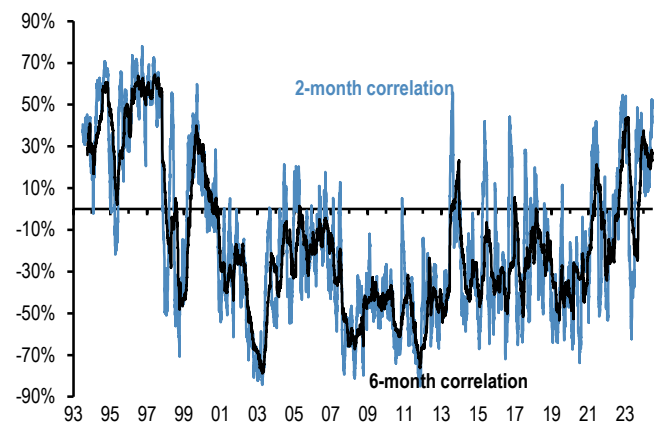
\$bn per quarter of Net Sales, i.e. includes net new sales + reinvested dividends for Mutual Funds and ETFs globally, i.e. for funds domiciled both inside and outside the US. Data come from ICI (worldwide data) and are till Q1'24.



Source: ICI, J.P. Morgan.

**Figure 9: Bond/Equity correlation**

Rolling 2- and 6-month correlation of daily returns of the MSCI AC World Index in local currency terms and the JPM Global Government Bond Index hedged into USD.



Source: Bloomberg Finance L.P., J.P. Morgan.

**Figure 10: Balanced/Mixed Fund AUM as % of Total Fund AUM worldwide**



Source: ICI, J.P. Morgan.

**Of the \$8.33bn that MicroStrategy spent cumulatively since inception to acquire bitcoins, \$3.4bn or 40% was spent over the past three quarters alone**

- On June 20, 2024, MicroStrategy announced that it acquired 11,931 bitcoins for approximately \$786mn in cash between April 27th and June 19th, using proceeds from a \$800mn convertible note offering. This takes MicroStrategy’s total holdings to 226,331 bitcoins as of June 20th . Cumulatively since inception, MicroStrategy spent \$8.33bn to acquire these 226,331 bitcoins at an average purchase price of \$36,798 per bitcoin, inclusive of fees and expenses.
- MicroStrategy’s 226,331 bitcoin holdings as of June 20<sup>th</sup> compare to 214,278 at end-March 2024 and 189,150 at year-end. In other words, MicroStrategy spent more than \$2bn to buy bitcoins in the first half of the year funded via the sale of convertible notes, showing once again the company’s determination to transform itself to a leveraged bet on bitcoin. This follows \$1.25bn of bitcoin purchases in Q4 2023.
- The above purchases imply that of the \$8.33bn that MicroStrategy spent cumulatively since inception to acquire bitcoins, \$3.4bn or 40% was spent over the past three quarters alone. This proves that MicroStrategy played a very significant role in propagating bitcoin and crypto over the past three quarters. As mentioned before in our publication, we believe debt-funded bitcoin purchases by MicroStrategy add leverage and froth to the current crypto rally and raise the risk of more severe deleveraging in a potential downturn in the future.

## Appendix

**Chart A1: Global equity & bond fund flows**

\$bn per year of Net Sales, i.e. includes net new sales + reinvested dividends for Mutual Funds and ETFs globally, i.e. for funds domiciled both inside and outside the US. Flows come from ICI (worldwide data up to Q1'24). Data since then are a combination of monthly and weekly data from Lipper, EPFR and ETF flows from Bloomberg Finance L.P.



Source: ICI, EPFR, Lipper, Bloomberg Finance L.P., J.P. Morgan.

**Table A1: Flow Monitor**

\$bn per week. The first two rows include Mutual Fund and ETF flows globally, i.e. flows for funds domiciled both inside and outside the US (source: EPFR). The last four rows only include funds domiciled in the US. International Equity funds are equity funds domiciled in the US that invest outside the US (source: ICI and Bloomberg Finance L.P.).

| MF & ETF Flows     | 26-Jun | 4 wk avg  | 13 wk avg | 2024 avg |
|--------------------|--------|-----------|-----------|----------|
| All Equity         | 8.68   | 12.8      | 6.9       | 8.6      |
| All Bond           | 7.34   | 10.5      | 10.0      | 10.7     |
| US Equity          | -14.05 | -1.0      | -5.5      | -4.5     |
| US Bonds           | 0.64   | 3.3       | 4.4       | 7.1      |
| Non-US Equity      | 22.73  | 13.8      | 12.3      | 13.1     |
| Non-US Bonds       | 6.70   | 7.1       | 5.7       | 3.6      |
| US Taxable Bonds   | 6.07   | 5.8       | 4.7       | 4.2      |
| US Municipal Bonds | -0.65  | 0.2       | 0.1       | 0.0      |
| US HG Bonds        | 3.86   | 3.2       | 2.9       | 4.1      |
| US HY Bonds        | -0.43  | 0.3       | 0.3       | 0.3      |
| US MMFs            | 15.09  | 7.5       | 2.5       | 8.1      |
| UCITS Flows        | Apr-24 | 3 mth avg | 2023 avg  | 2024 avg |
| Euro MMFs          | 15.04  | 1.23      | 15.63     | 8.36     |
| Euro Equities      | -1.49  | 3.4       | 0.6       | 2.5      |
| Euro Bonds         | 28.26  | 28.4      | 12.3      | 30.0     |

Source: ICI, EPFR, EFAMA, Bloomberg Finance L.P., and J.P. Morgan.

**Chart A2: Fund flow indicator**

**Difference between flows into Equity and Bond funds:** \$bn per week. Difference between flows into Equity vs. Bond funds in \$bn per week. Flows include Mutual Fund and ETF flows globally, i.e. funds domiciled both inside and outside the US (source: EPFR). The thin blue line shows the 4-week average of difference between Equity and Bond fund flows. Dotted lines depict  $\pm 1$  StDev of the blue line. The thick black line shows a smoothed version of the same series. The smoothing is done using a Hodrick-Prescott filter with a Lambda parameter of 100.



Source: EPFR, J.P. Morgan.

**Table A2: Trading turnover monitor**

Volumes are monthly and Turnover ratio is annualised (monthly trading volume annualised divided by the amount outstanding). UST Cash is primary dealer transactions in all US government securities. UST futures are from Bloomberg Finance L.P. JGBs are OTC volumes in all Japanese government securities. Bunds, Gold, Oil and Copper are futures. Gold includes Gold ETFs. Min-Max chart is based on Turnover ratio. For Bunds and Commodities, futures trading volumes are used while the outstanding amount is proxied by open interest. The diamond reflects the latest turnover observation. The thin blue line marks the distance between the min and max for the complete time series since Jan-2005 onwards. Y/Y change is change in YTD notional volumes over the same period last year.

| As of May-24          | MIN | MAX | Turnover ratio | Vol (tr) | y/y chng |
|-----------------------|-----|-----|----------------|----------|----------|
| <b>Equities</b>       |     |     |                |          |          |
| EM Equity             | ◆   | —   | 0.8            | \$0.9    | 16%      |
| DM Equity             | ◆   | —   | 1.2            | \$7.4    | 17%      |
| <b>Govt Bonds</b>     |     |     |                |          |          |
| UST cash              | ◆   | —   | 12.1           | \$17.1   | 12%      |
| UST futures           | ◆   | —   | 0.8            | \$23.6   | 20%      |
| JGBs                  | ◆   | ◆   | 45.0           | ¥4,398   | 20%      |
| Bund futures          | ◆   | ◆   | 1.5            | €6.7     | 23%      |
| <b>Credit</b>         |     |     |                |          |          |
| US HG                 | ◆   | ◆   | 1.0            | \$0.6    | 22%      |
| US HY                 | ◆   | ◆   | 0.8            | \$0.1    | 8%       |
| US Convertibles       | ◆   | ◆   | 3.1            | \$0.04   | 14%      |
| <b>Commodities</b>    |     |     |                |          |          |
| Gold                  | ◆   | ◆   | 56.6           | \$1.5    | 23%      |
| Oil                   | ◆   | ◆   | 91.9           | \$2.7    | -23%     |
| Copper                | ◆   | ◆   | 2.0            | \$0.7    | 27%      |
| <b>Digital Assets</b> |     |     |                |          |          |
| CME Bitcoin           | ◆   | ◆   | 93.1           | \$0.061  | 192%     |
| CME Ethereum          | ◆   | ◆   | 175.3          | \$0.018  | 80%      |

\* Data with one month lag

Source: Bloomberg Finance L.P., Federal Reserve, Trace, Japan Securities Dealer Association, WFE, J.P. Morgan.

03 July 2024

## ETF Flow Monitor (as of 3rd July)

**Chart A3: Global Cross Asset ETF Flows**

Cumulative flow into ETFs as a % of AUM



Source: Bloomberg Finance L.P., J.P. Morgan.

**Chart A4: Bond ETF Flows**

Cumulative flow into bond ETFs as a % of AUM



Source: Bloomberg Finance L.P., J.P. Morgan.

**Chart A5: Global Equity ETF Flows**

Cumulative flow into global equity ETFs as a % of AUM



Source: Bloomberg Finance L.P., J.P. Morgan.

Note: We include ETFs with AUM > \$200mm in all the flow monitor charts. Chart A5 exclude China On-shore (A-share) ETFs from EM and in Japan. We subtract the BoJ buying of ETFs.

**Chart A6: Equity Sectoral and Regional ETF Flows**

Rolling 3-month and 12-month change in cumulative flows as a % of AUM. Both sorted by 12-month change



Source: Bloomberg Finance L.P., J.P. Morgan.

## Short Interest Monitor

**Chart A7: Short interest on the EEM and EMB US ETF**

Short Interest as a % share of share outstanding.



Source: S3, J.P. Morgan

**Chart A9: Short interest on the SPY and QQQ US ETF**

Short Interest as a % share of share outstanding. Last obs is for 1<sup>st</sup> July 2024.



Source: S3, J.P. Morgan

**Chart A8: Short interest on the LQD and HYG US ETF**

Short Interest as a % share of share outstanding.



Source: S3, J.P. Morgan

**Chart A10: S&P500 sector short interest**

Short interest as a % of shares outstanding based on z-scores. A strategy which overweights the S&P500 sectors with the highest short interest z-score (as % of shares o/s) vs. those with the lowest, produced an information ratio of 0.7 with a success rate of 56% (see F&L, Jun 28,2013 for more details).



Source: NYSE, Bloomberg Finance L.P., J.P. Morgan



## Chart A11a: Cross Asset Volatility Monitor 3m ATM Implied Volatility (1y history) as of 1st July-2024

This table shows the richness/cheapness of current three-month implied volatility levels (red dot) against their one-year historical range (thin blue bar) and the ratio to current realised volatility. Assets with implied volatility outside their 25th/75th percentile range (thick blue bar) are highlighted. The implied-to-realised volatility ratio uses 3-month implied volatilities and 1-month (around 21 trading days) realised volatilities for each asset.

| Asset                     | Current | Low | Low date  | High | High date | Upside | Downside | Implied/realized volatility |
|---------------------------|---------|-----|-----------|------|-----------|--------|----------|-----------------------------|
| <b>S&amp;P 500</b>        | 12%     | 11% | 21-May-24 | 19%  | 27-Oct-23 | 7%     | 0%       | 1.78x                       |
| <b>EuroSTOXX</b>          | 14%     | 12% | 20-May-24 | 19%  | 20-Oct-23 | 6%     | 2%       | 0.80x                       |
| <b>Nikkei 225</b>         | 16%     | 16% | 01-Jul-24 | 21%  | 26-Oct-23 | 5%     | 0%       | 1.25x                       |
| <b>Hang Seng</b>          | 19%     | 19% | 18-Jun-24 | 25%  | 21-Aug-23 | 6%     | 1%       | 1.05x                       |
| <b>MSCI EM</b>            | 12%     | 11% | 28-Mar-24 | 32%  | 26-Jan-24 | 20%    | 0%       | 0.97x                       |
| <b>Gold</b>               | 13%     | 10% | 27-Feb-24 | 17%  | 15-Apr-24 | 3%     | 4%       | 0.70x                       |
| <b>Oil (brent)</b>        | 24%     | 21% | 18-Jun-24 | 41%  | 13-Oct-23 | 17%    | 2%       | 1.56x                       |
| <b>Copper</b>             | 20%     | 15% | 01-Mar-24 | 31%  | 20-May-24 | 11%    | 5%       | 0.71x                       |
| <b>BB commodity index</b> | 12%     | 12% | 28-Jun-24 | 17%  | 04-Jul-23 | 4%     | 0%       | 0.92x                       |
| <b>EUR/USD</b>            | 6%      | 5%  | 13-Mar-24 | 8%   | 20-Oct-23 | 2%     | 0%       | 0.80x                       |
| <b>USD/NOK</b>            | 10%     | 9%  | 23-May-24 | 14%  | 14-Aug-23 | 4%     | 1%       | 0.84x                       |
| <b>USD/JPY</b>            | 10%     | 8%  | 27-Feb-24 | 11%  | 15-Dec-23 | 1%     | 2%       | 1.25x                       |
| <b>GBP/USD</b>            | 6%      | 6%  | 13-Mar-24 | 8%   | 04-Oct-23 | 2%     | 0%       | 0.97x                       |
| <b>USD/CHF</b>            | 6%      | 6%  | 27-May-24 | 8%   | 03-Aug-23 | 2%     | 0%       | 0.80x                       |
| <b>10y US swaps</b>       | 96%     | 88% | 22-May-24 | 135% | 20-Oct-23 | 39%    | 8%       | 1.00x                       |
| <b>10y Eur swaps</b>      | 77%     | 70% | 28-May-24 | 109% | 10-Oct-23 | 32%    | 6%       | 1.13x                       |
| <b>CDX IG</b>             | 43%     | 36% | 20-May-24 | 52%  | 27-Oct-23 | 9%     | 7%       | 1.37x                       |
| <b>CDX HY</b>             | 33%     | 30% | 12-Jun-24 | 46%  | 27-Oct-23 | 13%    | 3%       | 1.35x                       |
| <b>iTraxx</b>             | 48%     | 37% | 22-Nov-23 | 56%  | 14-Jun-24 | 7%     | 11%      | 1.07x                       |
| <b>iTraxx X/O</b>         | 41%     | 32% | 22-Nov-23 | 50%  | 16-Apr-24 | 9%     | 9%       | 1.16x                       |

Source: J.P. Morgan, Bloomberg Finance L.P.

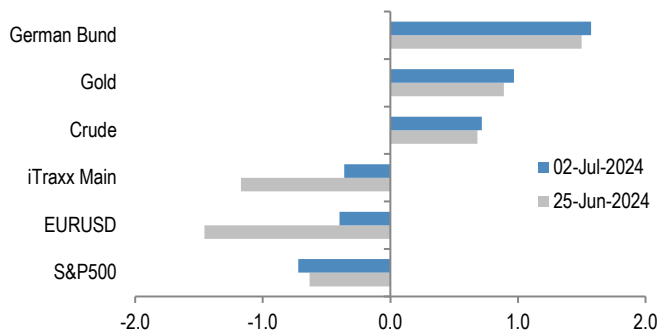
Note: Swaps volatility is 3m 10y payer ATM implied annualized BP vol and credit volatility is 3m 5y on-the-run ATM spread volatility. MSCI EM, Gold, Oil, Copper, BB Commodity Index and Treasury futures are 3m implied vol from Bloomberg.

### Definitions:

|                              |   |
|------------------------------|---|
| Current:                     | Latest available closing level (01-Jul-24)  |
| Low:                         | Lowest closing level in the last 1y   |
| Low date:                    | Date the lowest closing level was reached (or the first time it was reached in the case of several identical low closing levels)                    |
| High:                        | Highest closing level in the last 1y  |
| High date:                   | Date the highest closing level was reached (or the first time it was reached in the case of several identical high closing levels)                  |
| Graph:                       | Shows the current level and the 25th/75th percentile relative to the 1y high/low  |
| Upside:                      | Implied return/volatility percentage points from current level up to the High (note: return is calculated as simple difference for spread products) |
| Upside (σ):                  | Upside in terms of standard deviations (Upside / Current 1y realized volatility)  |
| Downside:                    | Implied return/volatility percentage points from current level down to the Low (note: return calculated as simple difference for spread products)   |
| Downside (σ):                | Downside in terms of standard deviations (Downside / Current 1y realized volatility)  |
| Implied/realized volatility: | Current 3m implied volatility / current realized 3m volatility  |

**Chart A11b: Option skew monitor**

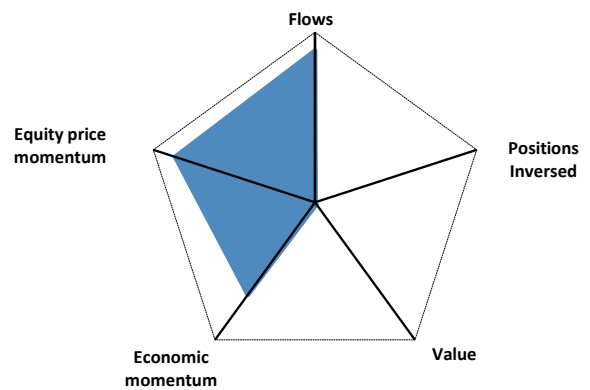
Skew is the difference between the implied volatility of out-of-the-money (OTM) call options and put options. A positive skew implies more demand for calls than puts and a negative skew, higher demand for puts than calls. It can therefore be seen as an indicator of risk perception in that a highly negative skew inequities is indicative of a bearish view. The chart shows z-score of the skew, i.e. the skew minus a rolling 2-year avg skew divided by a rolling two-year standard deviation of the skew. A negative skew on iTraxx Main means investors favour buying protection, i.e. a short risk position. A positive skew for the Bund reflects a long duration view, also a short risk position.



Source: J.P. Morgan.

**Chart A11c: Equity-Bond metric map**

**Explanation of Equity - Bond metric map:** Each of the five axes corresponds to a key indicator for markets. The position of the blue line on each axis shows how far the current observation is from the extremes at either end of the scale. For example, a reading at the centre for value would mean that risky assets are the most expensive they have ever been while a reading at the other end of the axis would mean they are the cheapest they have ever been. Overall, the larger the blue area within the pentagon, the better for the risky markets. All variables are expressed as the percentile of the distribution that the observation falls into. I.e. a reading in the middle of the axis means that the observation falls exactly at the median of all historical observations. **Value:** The slope of the risk-return trade-off line calculated across USTs, US HG and HY corporate bonds and US equities (see GMOS p. 6, Loeys et al, Jul 6 2011 for more details). **Positions:** Difference between net spec positions on US equities and intermediate sector UST. See Chart A13. **Flow momentum:** The difference between flows into equity funds (incl. ETFs) and flows into bond funds. Chart A1. We then smooth this using a Hodrick-Prescott filter with a lambda parameter of 100. We then take the weekly change in this smoothed series as shown in Chart A1. **Economic momentum:** The 2-month change in the global manufacturing PMI. (See REVISITING: Using the Global PMI as trading signal, Nikolaos Panigirtzoglou, Jan 2012). **Equity price momentum:** The 6-month change in the S&P500 equity index. As of 28th June 24.



Source: Bloomberg Finance L.P., J.P. Morgan.

## Spec position monitor

### Chart A12: Weekly Spec Position Monitor

Net spec positions are proxied by the number of long contracts minus the number of short contracts using the speculative category of the Commitments of Traders reports (as reported by CFTC). To proxy for speculative investors for equity and US Treasury bond futures positions we use Asset managers and leveraged funds (see Chart A13), whereas for other assets we use the legacy Non-Commercial category. This net position is then converted to a dollar amount by multiplying by the contract size and then the corresponding futures price. We then scale the net positions by open interest. The chart shows the z-score of these net positions. US rates is a duration-weighted composite of the individual UST futures contracts excluding the Eurodollar contract.



Source: Bloomberg Finance L.P., CFTC, J.P. Morgan

### Chart A13: Positions in US equity futures by Asset managers and Leveraged funds

CFTC positions in US equity futures by Leveraged funds and Asset managers (as a % of open interest). It is an aggregate of the S&P500, DowJones, NASDAQ and their Mini futures contracts.



Source: CFTC, Bloomberg Finance L.P. and J.P. Morgan

### Chart A14: Spec position indicator on Risky vs. Safe currencies

Difference between net spec positions on risky & safe currencies. Net spec position is calculated in USD across 5 'risky' and 3 'safe' currencies (safe currencies also include Gold). These positions are then scaled by open interest and we take an average of 'risky' and 'safe' assets to create two series. The chart is then simply the difference between the 'risky' and 'safe' series. The final series shown in the chart below is demeaned using data since 2006. The risky currencies are: AUD, NZD, CAD, MXN and BRL. The safe currencies are: JPY, CHF and Gold.



Source: Bloomberg Finance L.P., CFTC, J.P. Morgan.

### Chart A15: Spec position indicator on US equity futures vs. intermediate sector UST futures

Difference between net spec positions on US equity futures vs. intermediate sector UST futures. This indicator is derived by the difference between total CFTC positions in US equity futures by Asset managers + Leveraged Funds scaled by open interest minus the Asset managers + Leveraged Funds spec position on intermediate sector UST futures (i.e. all UST futures duration weighted ex ED and ex 2Y UST futures) also scaled by open interest.



Source: CFTC, Bloomberg Finance L.P. and J.P. Morgan

## Mutual fund and hedge fund betas

**Chart A16: 21-day rolling beta of 20 biggest active US bond mutual fund managers with respect to the US Agg Bond Index**

The dotted line shows the average beta since 2013.



Source: Bloomberg Finance L.P., J.P. Morgan.

**Chart A17: 21-day rolling beta of 20 biggest active Euro bond mutual fund managers with respect to the Euro Agg Bond Index**

The dotted line shows the average beta since 2013.



Source: Bloomberg Finance L.P., J.P. Morgan.

**Chart A18: Performance of various type of investors**

The table depicts the performance of various types of investors in % as of 10th June 2024.

| Date                       | 2018  | 2019  | 2020  | 2021  | 2022   | 2023  | 2024  |
|----------------------------|-------|-------|-------|-------|--------|-------|-------|
| <b>Investors</b>           |       |       |       |       |        |       |       |
| Equity L/S                 | -4.8% | 12.6% | 13.4% | 9.3%  | -7.0%  | 11.3% | 7.9%  |
| Macro ex-CTAs              | -2.0% | 5.6%  | 4.9%  | 4.3%  | 11.5%  | 1.3%  | 5.4%  |
| CTAs                       | -3.7% | 7.1%  | 1.2%  | 8.8%  | 14.7%  | -2.5% | 8.6%  |
| Risk Parity Funds          | -6.5% | 18.4% | 3.5%  | 4.7%  | -18.6% | 6.0%  | 4.0%  |
| US Balanced MFs            | -4.9% | 20.1% | 13.2% | 14.4% | -13.0% | 13.8% | 6.1%  |
| <b>Benchmark</b>           |       |       |       |       |        |       |       |
| MSCI AC World              | -9.4% | 26.6% | 16.3% | 16.4% | -18.4% | 22.2% | 11.6% |
| Barclays Global Agg        | 1.8%  | 8.2%  | 5.6%  | -2.5% | -11.2% | 7.1%  | -0.3% |
| 60 US Equity : 40 US Bonds | -1.9% | 22.2% | 13.3% | 14.8% | -15.4% | 18.6% | 9.1%  |
| S&P Riskparity Vol 10      | -4.3% | 22.8% | 11.5% | 12.8% | -16.2% | 15.0% | 3.5%  |

Source: Bloomberg Finance L.P., HFR, Pivotal Path, J.P. Morgan.

**Chart A19: Momentum signals for 10Y UST and 10Y Bunds**

Average z-score of Short- and Long-term momentum signal in our Trend Following Strategy framework shown in Tables A3 and A4 below in the Appendix



Source: Bloomberg Finance L.P., J.P. Morgan.

03 July 2024

**Chart A20: Momentum signals for S&P500**

Average z-score of Short- and Long-term momentum signal in our Trend Following Strategy framework shown in Tables A3 and A4 below in the Appendix.



Source: Bloomberg Finance L.P., J.P. Morgan.

**Chart A21: Equity beta of US Balanced Mutual funds and Risk Parity funds**

Rolling 21-day equity beta based on a bivariate regression of the daily returns of our Balanced Mutual fund and Risk Parity fund return indices to the daily returns of the S&P 500 and BarCap US Agg indices. Given that these funds invest in both equities and bonds we believe that the bivariate regression will be more suitable for these funds. Our risk parity index consists of 25 daily reporting Risk Parity funds. Our Balanced Mutual fund index includes the top 20 US-based active funds by assets and that have existed since 2006. Our Balanced Mutual fund index has a total AUM of \$700bn, which is around half of the total AUM of \$1.5tr of US based Balanced funds which we believe to be a good proxy of the overall industry. It excludes tracker funds and funds with a low tracking error. Dotted lines are average since 2015.



Source: Bloomberg Finance L.P., J.P. Morgan.

**Chart A22: Equity beta of monthly reporting Equity Long/Short hedge funds**

Proxied by the ratio of the monthly performance of Pivotal Path Asset-Weighted Equity Hedge fund index divided by the monthly performance of MSCI ACWorld Index.



Source: Bloomberg Finance L.P., Pivotal Path, J.P. Morgan

**Chart A23: USD exposure of currency hedge funds**

The net spec position in the USD as reported by the CFTC. Spec is the non-commercial category from the CFTC.



Source: CFTC, Barclay, Datastream, Bloomberg Finance L.P., J.P. Morgan.

## CTAs – Trend following investors' momentum indicators

**Table A3: Simple return momentum trading rules across various commodities**

Optimal lookback period of each momentum strategy combined with a mean reversion indicator that turns signal neutral when momentum z-score more than 1.5 standard deviations above or below mean, and a filter that turns neutral when the z-score is low (below 0.05 and above -0.05) to avoid excessive trading. Lookbacks, current signals and z-scores are shown for shorter-term and longer-term momentum separately, along with performance of a combined signal. Annualized return, volatility and information ratio of the signal; current signal; and z-score of the current return over the relevant lookback period; data from 1999 onward.

|                        |       | Lookback (moving avg, days) | Annualized return (%) | Vol (%) | IR   | Current signal | Time since last change (days) | Z-score | % Change of return index from its moving average |
|------------------------|-------|-----------------------------|-----------------------|---------|------|----------------|-------------------------------|---------|--|
| WTI                    | short | 21                          |                       |         |      | 1              | 16                            | 0.8     | 4.9%   |
|                        | long  | 462                         | 7.5                   | 22.6    | 0.33 | 1              | 16                            | 0.3     | 9.5%   |
| Brent                  | short | 84                          |                       |         |      | 1              | 10                            | 0.3     | 3.0%   |
|                        | long  | 504                         | 6.0                   | 21.5    | 0.28 | 1              | 16                            | 0.3     | 9.2%   |
| Unleaded gas           | short | 105                         |                       |         |      | 1              | 1                             | 0.1     | 1.2%   |
|                        | long  | 483                         | 4.4                   | 23.6    | 0.19 | 1              | 11                            | 0.3     | 8.4%   |
| Heat Oil               | short | 63                          |                       |         |      | 1              | 1                             | 0.4     | 4.0%   |
|                        | long  | 483                         | 5.8                   | 21.7    | 0.27 | 1              | 6                             | 0.2     | 5.7%   |
| Gasoil                 | short | 63                          |                       |         |      | 1              | 5                             | 0.5     | 4.8%   |
|                        | long  | 378                         | 9.2                   | 20.6    | 0.45 | 1              | 16                            | 0.5     | 12.7%  |
| Nat gas                | short | 105                         |                       |         |      | -1             | 1                             | -0.2    | -3.8%  |
|                        | long  | 315                         | 17.7                  | 35.3    | 0.50 | -1             | 91                            | -0.9    | -26.4%   |
| EU emission allowances | short | 42                          |                       |         |      | -1             | 16                            | -0.1    | -0.9%  |
|                        | long  | 483                         | 11.8                  | 30.0    | 0.39 | -1             | 186                           | -0.3    | -13.6%   |
| Gold                   | short | 21                          |                       |         |      | -1             | 7                             | -0.1    | -0.4%  |
|                        | long  | 483                         | 3.1                   | 10.5    | 0.29 | 1              | 29                            | 1.0     | 12.0%  |
| Silver                 | short | 10                          |                       |         |      | -1             | 6                             | -0.1    | -0.3%  |
|                        | long  | 462                         | 5.1                   | 18.9    | 0.27 | 1              | 23                            | 0.8     | 17.4%  |
| Palladium              | short | 42                          |                       |         |      | 1              | 2                             | 0.8     | 6.7%   |
|                        | long  | 273                         | 13.4                  | 22.7    | 0.59 | -1             | 447                           | -0.3    | -7.7%  |
| Platinum               | short | 105                         |                       |         |      | 1              | 11                            | 0.4     | 3.5%   |
|                        | long  | 273                         | 5.5                   | 18.2    | 0.30 | 1              | 11                            | 0.3     | 4.4%   |
| Aluminium              | short | 105                         |                       |         |      | 1              | 22                            | 0.2     | 1.4%   |
|                        | long  | 357                         | 5.4                   | 15.2    | 0.36 | 1              | 64                            | 0.3     | 3.8%   |
| Copper                 | short | 147                         |                       |         |      | 1              | 29                            | 0.3     | 4.2%   |
|                        | long  | 399                         | 8.3                   | 17.4    | 0.48 | 1              | 81                            | 0.3     | 7.2%   |
| Lead                   | short | 126                         |                       |         |      | 0              | 0                             | 0.0     | 0.2%   |
|                        | long  | 357                         | 1.4                   | 19.8    | 0.07 | 0              | 0                             | 0.0     | 0.7%   |
| Nickel                 | short | 42                          |                       |         |      | -1             | 20                            | -1.2    | -10.0%   |
|                        | long  | 336                         | 13.5                  | 23.5    | 0.57 | -1             | 23                            | -0.6    | -15.3%   |
| Zinc                   | short | 126                         |                       |         |      | 1              | 29                            | 0.6     | 6.9%   |
|                        | long  | 399                         | 9.4                   | 20.0    | 0.47 | 1              | 11                            | 0.3     | 5.9%   |
| Wheat                  | short | 168                         |                       |         |      | -1             | 12                            | -0.6    | -7.7%  |
|                        | long  | 294                         | 3.4                   | 23.6    | 0.14 | -1             | 19                            | -0.8    | -12.4%   |
| Kansas wheat           | short | 147                         |                       |         |      | -1             | 11                            | -0.5    | -5.5%  |
|                        | long  | 483                         | 8.7                   | 21.0    | 0.41 | -1             | 83                            | -1.1    | -23.3%   |
| Corn                   | short | 63                          |                       |         |      | -1             | 8                             | -1.2    | -9.9%  |
|                        | long  | 399                         | 8.2                   | 16.9    | 0.48 | -1             | 244                           | -1.3    | -24.1%   |
| Soybeans               | short | 42                          |                       |         |      | -1             | 17                            | -0.8    | -4.6%  |
|                        | long  | 231                         | 5.9                   | 14.7    | 0.40 | -1             | 140                           | -0.8    | -10.8%   |
| Cotton                 | short | 168                         |                       |         |      | -1             | 62                            | -1.0    | -13.7%   |
|                        | long  | 483                         | 5.3                   | 18.9    | 0.28 | -1             | 63                            | -0.6    | -16.0%   |
| Sugar                  | short | 63                          |                       |         |      | 1              | 3                             | 0.7     | 6.5%   |
|                        | long  | 252                         | 7.3                   | 21.7    | 0.34 | -1             | 108                           | -0.4    | -7.6%  |
| Coffee                 | short | 63                          |                       |         |      | 1              | 19                            | 0.4     | 3.4%   |
|                        | long  | 273                         | 6.6                   | 23.4    | 0.28 | 0              | 0                             | 1.5     | 27.3%  |
| Cocoa*                 |       | 10                          | 5.0                   | 28.7    | 0.17 | -1             | 0                             | -1.5    | -5.2%  |

\* For cocoa, uses only short-term momentum and a z-score threshold of 3 rather than 1.5 as for other contracts.

Source: Bloomberg Finance L.P., J.P. Morgan calculations.

**Table A4: Simple return momentum trading rules across international equity indices, bond futures and FX**

Optimal lookback period of each momentum strategy combined with a mean reversion indicator that turns signal neutral when momentum z-score more than 1.5 standard deviations above or below mean, and a filter that turns neutral when the z-score is low (below 0.05 and above -0.05) to avoid excessive trading. Lookbacks, current signals and z-scores are shown for shorter-term and longer-term momentum separately, along with performance of a combined signal. Annualized return, volatility and information ratio of the signal; current signal; and z-score of the current return over the relevant lookback period; data from 1999 onward.

|                  |       | Lookback (moving avg, days) | Annualized return (%) | Vol (%) | IR   | Current signal | Time since last change (days) | Z-score | % Change of return index from its moving average |
|------------------|-------|-----------------------------|-----------------------|---------|------|----------------|-------------------------------|---------|--|
| S&P 500          | short | 84                          |                       |         |      | 1              | 43                            | 1.0     | 5.3%   |
|                  | long  | 357                         | 7.1                   | 11.9    | 0.60 | 0              | 22                            | 1.8     | 20.4%  |
| Nasdaq 100       | short | 84                          |                       |         |      | 1              | 42                            | 1.1     | 8.6%   |
|                  | long  | 462                         | 8.6                   | 14.8    | 0.58 | 0              | 19                            | 1.8     | 35.6%  |
| Nikkei           | short | 84                          |                       |         |      | 1              | 5                             | 0.5     | 3.1%   |
|                  | long  | 294                         | 3.9                   | 14.4    | 0.27 | 1              | 55                            | 1.2     | 15.7%  |
| FTSE 100         | short | 168                         |                       |         |      | 1              | 28                            | 0.8     | 5.0%   |
|                  | long  | 462                         | 4.6                   | 12.1    | 0.38 | 1              | 441                           | 0.9     | 9.9%   |
| Eurostoxx 50     | short | 168                         |                       |         |      | 1              | 62                            | 0.5     | 4.2%   |
|                  | long  | 315                         | 4.6                   | 15.6    | 0.30 | 1              | 175                           | 0.8     | 10.1%  |
| MSCI EM          | short | 42                          |                       |         |      | 1              | 19                            | 0.1     | 0.5%   |
|                  | long  | 336                         | 12.9                  | 11.4    | 1.13 | 1              | 115                           | 0.6     | 9.6%   |
| 2Y USTs          | short | 252                         |                       |         |      | -1             | 120                           | -0.6    | -0.7%  |
|                  | long  | 420                         | 1.1                   | 1.1     | 0.97 | -1             | 174                           | -0.8    | -1.5%  |
| 5Y USTs          | short | 252                         |                       |         |      | -1             | 107                           | -0.4    | -0.9%  |
|                  | long  | 420                         | 1.9                   | 3.1     | 0.64 | -1             | 174                           | -0.7    | -2.3%  |
| 10Y USTs         | short | 42                          |                       |         |      | -1             | 1                             | -0.1    | -0.2%  |
|                  | long  | 504                         | 2.3                   | 3.7     | 0.61 | -1             | 163                           | -0.7    | -3.8%  |
| 2Y Schatz        | short | 189                         |                       |         |      | 0              | 107                           | -2.5    | -2.0%  |
|                  | long  | 504                         | 0.7                   | 0.9     | 0.74 | 0              | 297                           | -3.0    | -4.5%  |
| 5y Bobl          | short | 84                          |                       |         |      | -1             | 15                            | -1.1    | -1.2%  |
|                  | long  | 483                         | 1.6                   | 2.1     | 0.79 | 0              | 1                             | -1.6    | -5.1%  |
| 10y Bund         | short | 84                          |                       |         |      | -1             | 11                            | -1.0    | -1.9%  |
|                  | long  | 483                         | 2.8                   | 3.7     | 0.75 | -1             | 156                           | -1.1    | -5.7%  |
| 10Y JGB          | short | 126                         |                       |         |      | -1             | 21                            | -1.3    | -1.3%  |
|                  | long  | 273                         | 1.1                   | 2.1     | 0.51 | -1             | 58                            | -0.9    | -1.3%  |
| 10Y Gilts        | short | 105                         |                       |         |      | -1             | 23                            | -0.9    | -2.1%  |
|                  | long  | 399                         | 2.0                   | 4.4     | 0.46 | -1             | 150                           | -1.1    | -5.6%  |
| 10y OAT vs Bund  | short | 189                         |                       |         |      | -1             | 1                             | -1.1    | -1.0%  |
|                  | long  | 294                         | 0.6                   | 1.4     | 0.40 | -1             | 2                             | -0.8    | -0.8%  |
| 10y BTP vs. Bund | short | 84                          |                       |         |      | -1             | 13                            | -0.1    | -0.4%  |
|                  | long  | 273                         | 2.6                   | 6.2     | 0.42 | 1              | 183                           | 0.4     | 2.1%   |
| Euro             | short | 42                          |                       |         |      | -1             | 17                            | -0.5    | -1.0%  |
|                  | long  | 273                         | 3.0                   | 6.2     | 0.48 | -1             | 218                           | -0.7    | -4.2%  |
| Yen              | short | 21                          |                       |         |      | 0              | 1                             | -1.6    | -2.5%  |
|                  | long  | 462                         | 3.6                   | 6.3     | 0.57 | 0              | 120                           | -2.3    | -19.2%   |
| Sterling         | short | 168                         |                       |         |      | -1             | 13                            | -0.3    | -1.4%  |
|                  | long  | 294                         | 2.1                   | 7.1     | 0.29 | -1             | 81                            | -0.4    | -2.4%  |
| AUD              | short | 42                          |                       |         |      | 0              | 0                             | 0.0     | -0.1%  |
|                  | long  | 420                         | 4.0                   | 7.7     | 0.52 | -1             | 446                           | -0.5    | -4.5%  |
| CAD              | short | 168                         |                       |         |      | -1             | 130                           | -0.7    | -2.7%  |
|                  | long  | 504                         | 0.9                   | 6.0     | 0.15 | -1             | 536                           | -1.0    | -6.5%  |

Source: Bloomberg Finance L.P., J.P. Morgan calculations.

## Corporate Activity

**Chart A24: G4 non-financial corporate capex and cash flow as % of GDP**

% of GDP, G4 includes the US, the UK, the Euro area and Japan. Last observation as of Q4 2023.



Source: ECB, BOJ, BOE, Federal Reserve flow of funds, J.P. Morgan.

**Chart A25: G4 non-financial corporate sector net debt and equity issuance**

\$tr per quarter, G4 includes the US, the UK, the Euro area and Japan. Last observation as of Q4 2023.



Source: ECB, BOJ, BOE, Federal Reserve flow of funds, J.P. Morgan.

**Chart A26: Global M&A and LBO**

\$tr. M&A and LBOs are announced.



Source: Dealogic, J.P. Morgan.

**Chart A27: US and non-US share buyback**

\$bn, are as of June'24. Buybacks are announced.

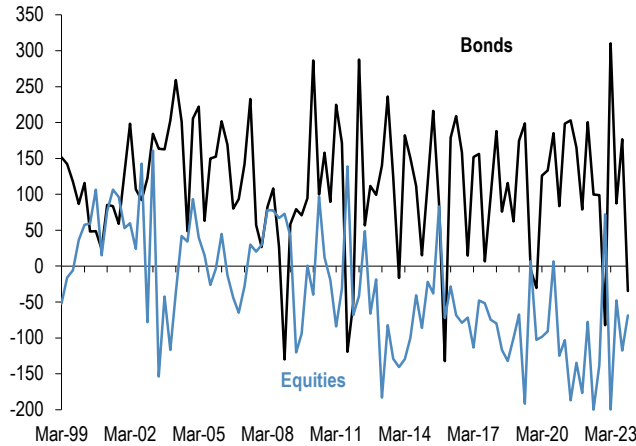


Source: Bloomberg Finance L.P., Thomson Reuters, J.P. Morgan

## Pension fund and insurance company flows

**Chart A28: G4 pension funds and insurance companies equity and bond flows**

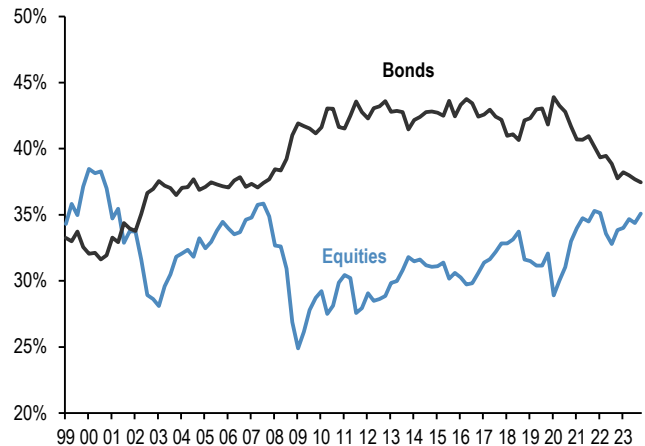
Equity and bond buying in \$bn per quarter. G4 includes the US, the UK, Euro area and Japan. Last observation is Q4 2023.



Source: ECB, BOJ, BOE, Federal Reserve flow of funds, J.P. Morgan.

**Chart A29: G4 pension funds and insurance companies equity and bond levels**

Equity and bond as % of total assets per quarter. G4 includes the US, the UK, Euro area and Japan. Last observation is Q4 2023.



Source: ECB, BOJ, BOE, Federal Reserve flow of funds., J.P. Morgan

**Chart A30: Pension fund deficits**

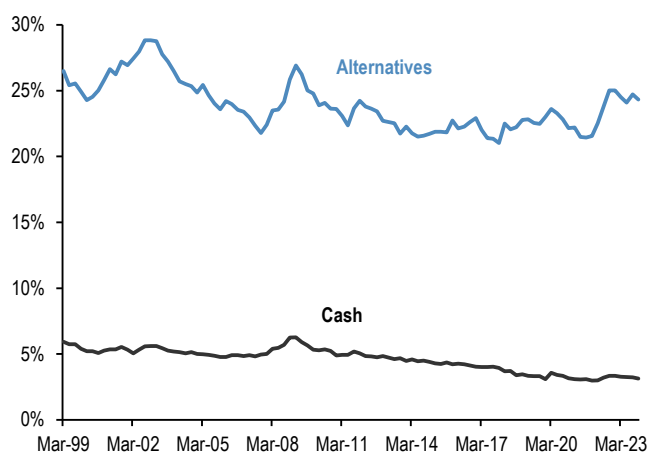
US\$bn. For US, funded status of the 100 largest corporate defined benefit pension plans, from Milliman. For UK, funded status of the defined benefit schemes eligible for entry to the Pension Protection Fund, converted to US\$at today's exchange rates. Last obs. is May'24 for US & UK.



Source: Milliman, UK Pension Protection Fund, J.P. Morgan.

**Chart A31: G4 pension funds and insurance companies cash and alternatives levels**

Cash and alternative investments as % of total assets per quarter. G4 includes the US, the UK, Euro area and Japan. Last observation is Q4 2023.



Source: ECB, BOJ, BOE, Federal Reserve flow of funds, J.P. Morgan.



## Credit Creation

**Chart A32: Credit creation in the US, Japan and Euro area**

Rolling sum of 4-quarter credit creation as % of GDP. Credit creation includes both bank loans as well as net debt issuance by non-financial corporations and households. Last obs. is Q4'23 for Japan, & Euro Area and Q1'24 for US.



Source: Fed, ECB, BoJ, Bloomberg Finance L.P., and J.P. Morgan calculations.

**Chart A33: Credit creation in EM**

Rolling sum of 4-quarter credit creation as % of GDP. Credit creation includes both bank loans as well as net debt issuance by non-financial corporations and households. Last obs. is for Q3'23.



Source: G4 Central banks FoF, BIS, ICI, Barcap, Bloomberg Finance L.P., IMF, and J.P.Morgan calculation

**Chart A34: Monthly net issuance of US HG bonds**

\$bn. May 2024.



Source: Dealogic, J.P. Morgan

**Table A5: Equity and Bond issuance**

\$bn. Equity supply and corporate announcements are based on announced deals, not completed. M&A is announced deal value and buybacks are announced transactions. Y/Y change is change in YTD announcements over the same period last year.

| Equity Supply                  | 28-Jun | 4 wk avg  | 13 wk avg | y/y chng |
|--------------------------------|--------|-----------|-----------|----------|
| Global IPOs                    | 1.3    | 1.8       | 2.2       | -15%     |
| Secondary Offerings            | 5.4    | 11.4      | 7.8       | 16%      |
| <b>Corporate announcements</b> |        |           |           |          |
| M&A - Global                   | 65.6   | 57.2      | 62.0      | 22%      |
| - US Target                    | 19.4   | 19.3      | 24.8      | 40%      |
| - Non-US Target                | 46.2   | 37.9      | 37.2      | 9%       |
| Net bond issuance              | Feb-24 | 3 mth avg | YTD avg   | y/y chng |
| USD                            | 129    | 172       | 207       | 97%      |
| Non-USD                        | 2      | 44        | 133       | -44%     |

Source: Bloomberg Finance L.P., Dealogic, Thomson Reuters, J.P. Morgan.

## Bitcoin monitor

**Chart A35: Our Bitcoin position proxy based on open interest in CME Bitcoin futures contracts**

In number of contracts. Last obs. for 2<sup>nd</sup> July 2024.



Source: Bloomberg Finance L.P., J.P. Morgan

**Chart A36: Cumulative Flows in all Bitcoin funds and Gold ETF holdings**

Both the y-axis in \$bn.



Source: Bloomberg Finance L.P., J.P. Morgan.

**Chart A37: Ratio of Bitcoin market price to production cost**

Based on the cost of production approach following Hayes (2018).



Source: Bitinfocharts, J.P. Morgan

**Chart A38: Flow pace into publicly-listed Bitcoin funds including Bitcoin ETFs**

\$mm per week, 4-week rolling average flow.



Source: Bloomberg Finance L.P., J.P. Morgan.

03 July 2024

## Japanese flows and positions

**Chart A39: Tokyo Stock Exchange margin trading: total buys minus total sells**

In bn of shares. Topix on right axis.



Source: Tokyo Stock Exchange, Bloomberg Finance L.P., J.P. Morgan.

**Chart A40: Monthly net purchases of Japanese bonds and Japanese equities by foreign residents**

\$bn, Last weekly obs. is for 21st June '24.



Source: Japan MoF, Bloomberg Finance L.P., and J.P. Morgan.

**Chart A41: Monthly net purchases of foreign bonds and foreign equities by Japanese residents**

\$bn, Last weekly obs. is for 21st June '24.



Source: Japan MoF, Bloomberg Finance L.P., and J.P. Morgan.

**Chart A42: Overseas CFTC spec positions**

CFTC spec positions are in \$bn. For Nikkei we use CFTC positions in Nikkei futures (USD & JPY) by Leveraged funds and Asset managers.

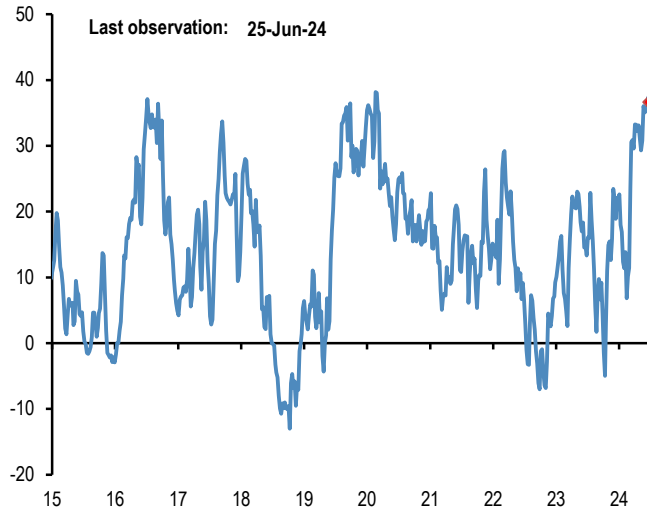


Source: Bloomberg Finance L.P., CFTC, J.P. Morgan calculations.

## Commodity flows and positions

**Chart A43: Gold spec positions**

\$bn. CFTC net long minus short position in futures for the Managed Money category.



Source: CFTC, Bloomberg Finance L.P., J.P. Morgan.

**Chart A44: Gold ETFs**

Mn troy oz. Physical gold held by all gold ETFs globally.



Source: Bloomberg Finance L.P., J.P. Morgan.

**Chart A45: Oil spec positions**

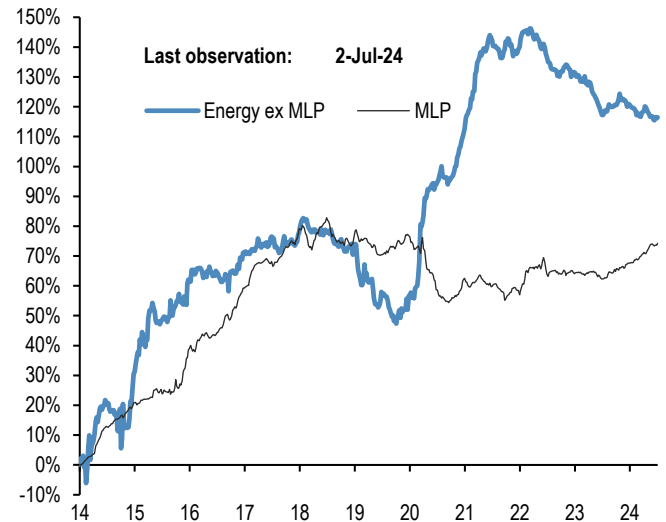
Net spec positions divided by open interest. CFTC futures positions for WTI and Brent are net long minus short for the Managed Money category.



Source: CFTC, Bloomberg Finance L.P., J.P. Morgan.

**Chart A46: Energy ETF flows**

Cumulative energy ETFs flow as a % of AUM. MLP refers to the Alerian MLP ETF.



Source: CFTC, Bloomberg Finance L.P., J.P. Morgan.

## Corporate FX hedging proxies

**Chart A47: Average beta of Eurostoxx 50 companies and Eurostoxx Small-Cap to trade-weighted EUR**

Rolling 26 weeks average betas based on a bivariate regression of the weekly returns of individual stocks in the Eurostoxx 50 index to the weekly returns of the MSCI AC World and JPM EUR Nominal broad effective exchange rate (NEER).



Source: Bloomberg Finance L.P., J.P. Morgan

**Chart A48: Average beta of S&P500 companies to trade-weighted US dollar**

Rolling 26 weeks average betas based on a bivariate regression of the weekly returns of stocks in the S&P500 index to the weekly returns of the MSCI AC World and JPM USD Nominal broad effective exchange rate (NEER).



Source: Bloomberg Finance L.P., J.P. Morgan

**Chart A49: Average beta of FTSE 100 companies to trade-weighted GBP**

Rolling 26 weeks average betas based on a bivariate regression of the weekly returns of individual stocks in the FTSE 100 index to the weekly returns of the MSCI AC World and JPM GBP Nominal broad effective exchange rate (NEER).



Source: Bloomberg Finance L.P., J.P. Morgan

**Chart A50: Average beta of MSCI EM companies to trade-weighted EM Currency Index**

Rolling 26 weeks average betas based on a bivariate regression of the weekly returns of individual stocks in the MSCI EM index to the weekly returns of the MSCI AC World and JPM EM Nominal broad effective exchange rate (NEER).



Source: Bloomberg Finance L.P., J.P. Morgan

## Non-Bank investors' implied allocations

**Chart A51: Implied equity allocation by non-bank investors globally**

Global equities as % total holdings of equities/bonds/M2 by non-bank investors. Dotted lines are averages.



Source: Bloomberg Finance L.P., J.P. Morgan

**Chart A52: Implied bond allocation by non-bank investors globally**

Global bonds as % total holdings of equities/bonds/M2 by non-bank investors. Dotted lines are averages.



Source: Bloomberg Finance L.P., J.P. Morgan

**Chart A53: Implied cash allocation by non-bank investors globally**

Global cash held by non-bank investors as % total holdings of equities/bonds/M2 by non-bank investors. Dotted lines are averages.



Source: Bloomberg Finance L.P., J.P. Morgan

**Chart A54: Implied commodity allocation by non-bank investors globally**

Proxied by the open interest of commodity futures ex gold as % of the stock of equities, bonds and cash held by non-bank investors globally.



Source: Bloomberg Finance L.P., J.P. Morgan

**Analyst Certification:** The Research Analyst(s) denoted by an “AC” on the cover of this report certifies (or, where multiple Research Analysts are primarily responsible for this report, the Research Analyst denoted by an “AC” on the cover or within the document individually certifies, with respect to each security or issuer that the Research Analyst covers in this research) that: (1) all of the views expressed in this report accurately reflect the Research Analyst’s personal views about any and all of the subject securities or issuers; and (2) no part of any of the Research Analyst’s compensation was, is, or will be directly or indirectly related to the specific recommendations or views expressed by the Research Analyst(s) in this report. For all Korea-based Research Analysts listed on the front cover, if applicable, they also certify, as per KOFIA requirements, that the Research Analyst’s analysis was made in good faith and that the views reflect the Research Analyst’s own opinion, without undue influence or intervention.

All authors named within this report are Research Analysts who produce independent research unless otherwise specified. In Europe, Sector Specialists (Sales and Trading) may be shown on this report as contacts but are not authors of the report or part of the Research Department.

**Important Disclosures**

An analyst listed on the front cover has personal holdings in digital or crypto assets.

**Company-Specific Disclosures:** Important disclosures, including price charts and credit opinion history tables, are available for compendium reports and all J.P. Morgan–covered companies, and certain non-covered companies, by visiting <https://www.jpmm.com/research/disclosures>, calling 1-800-477-0406, or e-mailing [research.disclosure.inquiries@jpmorgan.com](mailto:research.disclosure.inquiries@jpmorgan.com) with your request.

**Explanation of Equity Research Ratings, Designations and Analyst(s) Coverage Universe:**

J.P. Morgan uses the following rating system: Overweight (over the duration of the price target indicated in this report, we expect this stock will outperform the average total return of the stocks in the Research Analyst’s, or the Research Analyst’s team’s, coverage universe); Neutral (over the duration of the price target indicated in this report, we expect this stock will perform in line with the average total return of the stocks in the Research Analyst’s, or the Research Analyst’s team’s, coverage universe); and Underweight (over the duration of the price target indicated in this report, we expect this stock will underperform the average total return of the stocks in the Research Analyst’s, or the Research Analyst’s team’s, coverage universe. NR is Not Rated. In this case, J.P. Morgan has removed the rating and, if applicable, the price target, for this stock because of either a lack of a sufficient fundamental basis or for legal, regulatory or policy reasons. The previous rating and, if applicable, the price target, no longer should be relied upon. An NR designation is not a recommendation or a rating. In our Asia (ex-Australia and ex-India) and U.K. small- and mid-cap Equity Research, each stock’s expected total return is compared to the expected total return of a benchmark country market index, not to those Research Analysts’ coverage universe. If it does not appear in the Important Disclosures section of this report, the certifying Research Analyst’s coverage universe can be found on J.P. Morgan’s Research website, <https://www.jpmorganmarkets.com>.

**J.P. Morgan Equity Research Ratings Distribution, as of April 06, 2024**

|  | Overweight<br>(buy) | Neutral<br>(hold) | Underweight<br>(sell) |
|--|---------------------|-------------------|-----------------------|
| J.P. Morgan Global Equity Research Coverage* | 48%                 | 39%               | 14%                   |
| IB clients**                                 | 49%                 | 45%               | 35%                   |
| JPMS Equity Research Coverage*               | 46%                 | 42%               | 12%                   |
| IB clients**                                 | 70%                 | 66%               | 52%                   |

\*Please note that the percentages may not add to 100% because of rounding.

\*\*Percentage of subject companies within each of the "buy," "hold" and "sell" categories for which J.P. Morgan has provided investment banking services within the previous 12 months.

For purposes of FINRA ratings distribution rules only, our Overweight rating falls into a buy rating category; our Neutral rating falls into a hold rating category; and our Underweight rating falls into a sell rating category. Please note that stocks with an NR designation are not included in the table above. This information is current as of the end of the most recent calendar quarter.

**Equity Valuation and Risks:** For valuation methodology and risks associated with covered companies or price targets for covered companies, please see the most recent company-specific research report at <http://www.jpmorganmarkets.com>, contact the primary analyst or your J.P. Morgan representative, or email [research.disclosure.inquiries@jpmorgan.com](mailto:research.disclosure.inquiries@jpmorgan.com). For material information about the proprietary models used, please see the Summary of Financials in company-specific research reports and the Company Tearsheets, which are available to download on the company pages of our client website, <http://www.jpmorganmarkets.com>. This report also sets out within it the material underlying assumptions used.

A history of J.P. Morgan investment recommendations disseminated during the preceding 12 months can be accessed on the Research & Commentary page of <http://www.jpmorganmarkets.com> where you can also search by analyst name, sector or financial instrument.

**Analysts' Compensation:** The research analysts responsible for the preparation of this report receive compensation based upon various factors, including the quality and accuracy of research, client feedback, competitive factors, and overall firm revenues.

**Registration of non-US Analysts:** Unless otherwise noted, the non-US analysts listed on the front of this report are employees of non-US affiliates of J.P. Morgan Securities LLC, may not be registered as research analysts under FINRA rules, may not be associated persons of J.P.

Morgan Securities LLC, and may not be subject to FINRA Rule 2241 or 2242 restrictions on communications with covered companies, public appearances, and trading securities held by a research analyst account.

## Other Disclosures

---

J.P. Morgan is a marketing name for investment banking businesses of JPMorgan Chase & Co. and its subsidiaries and affiliates worldwide.

**UK MIFID FICC research unbundling exemption:** UK clients should refer to [UK MIFID Research Unbundling exemption](#) for details of J.P. Morgan's implementation of the FICC research exemption and guidance on relevant FICC research categorisation.

All research material made available to clients are simultaneously available on our client website, J.P. Morgan Markets, unless specifically permitted by relevant laws. Not all research content is redistributed, e-mailed or made available to third-party aggregators. For all research material available on a particular stock, please contact your sales representative.

Any long form nomenclature for references to China; Hong Kong; Taiwan; and Macau within this research material are Mainland China; Hong Kong SAR (China); Taiwan (China); and Macau SAR (China).

J.P. Morgan Research may, from time to time, write on issuers or securities targeted by economic or financial sanctions imposed or administered by the governmental authorities of the U.S., EU, UK or other relevant jurisdictions (Sanctioned Securities). Nothing in this report is intended to be read or construed as encouraging, facilitating, promoting or otherwise approving investment or dealing in such Sanctioned Securities. Clients should be aware of their own legal and compliance obligations when making investment decisions.

Any digital or crypto assets discussed in this research report are subject to a rapidly changing regulatory landscape. For relevant regulatory advisories on crypto assets, including bitcoin and ether, please see <https://www.jpmorgan.com/disclosures/cryptoasset-disclosure>.

The author(s) of this research report may not be licensed to carry on regulated activities in your jurisdiction and, if not licensed, do not hold themselves out as being able to do so.

**Exchange-Traded Funds (ETFs):** J.P. Morgan Securities LLC ("JPMS") acts as authorized participant for substantially all U.S.-listed ETFs. To the extent that any ETFs are mentioned in this report, JPMS may earn commissions and transaction-based compensation in connection with the distribution of those ETF shares and may earn fees for performing other trade-related services, such as securities lending to short sellers of the ETF shares. JPMS may also perform services for the ETFs themselves, including acting as a broker or dealer to the ETFs. In addition, affiliates of JPMS may perform services for the ETFs, including trust, custodial, administration, lending, index calculation and/or maintenance and other services.

**Options and Futures related research:** If the information contained herein regards options- or futures-related research, such information is available only to persons who have received the proper options or futures risk disclosure documents. Please contact your J.P. Morgan Representative or visit <https://www.theocc.com/components/docs/riskstoc.pdf> for a copy of the Option Clearing Corporation's Characteristics and Risks of Standardized Options or [http://www.finra.org/sites/default/files/Security\\_Futures\\_Risk\\_Disclosure\\_Statement\\_2018.pdf](http://www.finra.org/sites/default/files/Security_Futures_Risk_Disclosure_Statement_2018.pdf) for a copy of the Security Futures Risk Disclosure Statement.

**Changes to Interbank Offered Rates (IBORs) and other benchmark rates:** Certain interest rate benchmarks are, or may in the future become, subject to ongoing international, national and other regulatory guidance, reform and proposals for reform. For more information, please consult: [https://www.jpmorgan.com/global/disclosures/interbank\\_offered\\_rates](https://www.jpmorgan.com/global/disclosures/interbank_offered_rates)

**Private Bank Clients:** Where you are receiving research as a client of the private banking businesses offered by JPMorgan Chase & Co. and its subsidiaries ("J.P. Morgan Private Bank"), research is provided to you by J.P. Morgan Private Bank and not by any other division of J.P. Morgan, including, but not limited to, the J.P. Morgan Corporate and Investment Bank and its Global Research division.

**Legal entity responsible for the production and distribution of research:** The legal entity identified below the name of the Reg AC Research Analyst who authored this material is the legal entity responsible for the production of this research. Where multiple Reg AC Research Analysts authored this material with different legal entities identified below their names, these legal entities are jointly responsible for the production of this research. Research Analysts from various J.P. Morgan affiliates may have contributed to the production of this material but may not be licensed to carry out regulated activities in your jurisdiction (and do not hold themselves out as being able to do so). Unless otherwise stated below, this material has been distributed by the legal entity responsible for production. If you have any queries, please contact the relevant Research Analyst in your jurisdiction or the entity in your jurisdiction that has distributed this research material.

### Legal Entities Disclosures and Country-/Region-Specific Disclosures:

**Argentina:** JPMorgan Chase Bank N.A Sucursal Buenos Aires is regulated by Banco Central de la República Argentina ("BCRA"- Central Bank of Argentina) and Comisión Nacional de Valores ("CNV"- Argentinian Securities Commission - ALYC y AN Integral N°51). **Australia:** J.P. Morgan Securities Australia Limited ("JPMSAL") (ABN 61 003 245 234/AFS Licence No: 238066) is regulated by the Australian Securities and Investments Commission and is a Market Participant of ASX Limited, a Clearing and Settlement Participant of ASX Clear Pty Limited and a Clearing Participant of ASX Clear (Futures) Pty Limited. This material is issued and distributed in Australia by or on behalf of JPMSAL only to "wholesale clients" (as defined in section 761G of the Corporations Act 2001). A list of all financial products covered can be found by visiting <https://www.jpmm.com/research/disclosures>. J.P. Morgan seeks to cover companies of relevance to the domestic and



international investor base across all Global Industry Classification Standard (GICS) sectors, as well as across a range of market capitalisation sizes. If applicable, in the course of conducting public side due diligence on the subject company(ies), the Research Analyst team may at times perform such diligence through corporate engagements such as site visits, discussions with company representatives, management presentations, etc. Research issued by JPMSAL has been prepared in accordance with J.P. Morgan Australia's Research Independence Policy which can be found at the following link: [J.P. Morgan Australia - Research Independence Policy](#). **Brazil:** Banco J.P. Morgan S.A. is regulated by the Comissao de Valores Mobiliarios (CVM) and by the Central Bank of Brazil. Ombudsman J.P. Morgan: 0800-7700847 / 0800-7700810 (For Hearing Impaired) / [ouvidoria.jp.morgan@jpmorgan.com](mailto:ouvidoria.jp.morgan@jpmorgan.com). **Canada:** J.P. Morgan Securities Canada Inc. is a registered investment dealer, regulated by the Canadian Investment Regulatory Organization and the Ontario Securities Commission and is the participating member on Canadian exchanges. This material is distributed in Canada by or on behalf of J.P.Morgan Securities Canada Inc. **Chile:** Inversiones J.P. Morgan Limitada is an unregulated entity incorporated in Chile. **China:** J.P. Morgan Securities (China) Company Limited has been approved by CSRC to conduct the securities investment consultancy business. **Dubai International Financial Centre (DIFC):** JPMorgan Chase Bank, N.A., Dubai Branch is regulated by the Dubai Financial Services Authority (DFSA) and its registered address is Dubai International Financial Centre - The Gate, West Wing, Level 3 and 9 PO Box 506551, Dubai, UAE. This material has been distributed by JP Morgan Chase Bank, N.A., Dubai Branch to persons regarded as professional clients or market counterparties as defined under the DFSA rules. **European Economic Area (EEA):** Unless specified to the contrary, research is distributed in the EEA by J.P. Morgan SE ("JPM SE"), which is authorised as a credit institution by the Federal Financial Supervisory Authority (Bundesanstalt für Finanzdienstleistungsaufsicht, BaFin) and jointly supervised by the BaFin, the German Central Bank (Deutsche Bundesbank) and the European Central Bank (ECB). JPM SE is a company headquartered in Frankfurt with registered address at TaunusTurm, Taunustor 1, Frankfurt am Main, 60310, Germany. The material has been distributed in the EEA to persons regarded as professional investors (or equivalent) pursuant to Art. 4 para. 1 no. 10 and Annex II of MiFID II and its respective implementation in their home jurisdictions ("EEA professional investors"). This material must not be acted on or relied on by persons who are not EEA professional investors. Any investment or investment activity to which this material relates is only available to EEA relevant persons and will be engaged in only with EEA relevant persons. **Hong Kong:** J.P. Morgan Securities (Asia Pacific) Limited (CE number AAJ321) is regulated by the Hong Kong Monetary Authority and the Securities and Futures Commission in Hong Kong, and J.P. Morgan Broking (Hong Kong) Limited (CE number AAB027) is regulated by the Securities and Futures Commission in Hong Kong. JP Morgan Chase Bank, N.A., Hong Kong Branch (CE Number AAL996) is regulated by the Hong Kong Monetary Authority and the Securities and Futures Commission, is organized under the laws of the United States with limited liability. Where the distribution of this material is a regulated activity in Hong Kong, the material is distributed in Hong Kong by or through J.P. Morgan Securities (Asia Pacific) Limited and/or J.P. Morgan Broking (Hong Kong) Limited. **India:** J.P. Morgan India Private Limited (Corporate Identity Number - U67120MH1992FTC068724), having its registered office at J.P. Morgan Tower, Off. C.S.T. Road, Kalina, Santacruz - East, Mumbai – 400098, is registered with the Securities and Exchange Board of India (SEBI) as a 'Research Analyst' having registration number INH000001873. J.P. Morgan India Private Limited is also registered with SEBI as a member of the National Stock Exchange of India Limited and the Bombay Stock Exchange Limited (SEBI Registration Number – INZ000239730) and as a Merchant Banker (SEBI Registration Number - MB/INM000002970). Telephone: 91-22-6157 3000, Facsimile: 91-22-6157 3990 and Website: <http://www.jpmipl.com>. JPMorgan Chase Bank, N.A. - Mumbai Branch is licensed by the Reserve Bank of India (RBI) (Licence No. 53/ Licence No. BY.4/94; SEBI - IN/CUS/014/ CDSL : IN-DP-CDSL-444-2008/ IN-DP-NSDL-285-2008/ INBI00000984/ INE231311239) as a Scheduled Commercial Bank in India, which is its primary license allowing it to carry on Banking business in India and other activities, which a Bank branch in India are permitted to undertake. For non-local research material, this material is not distributed in India by J.P. Morgan India Private Limited. Compliance Officer: Spurthi Gadamsetty; [spurthi.gadamsetty@jpmchase.com](mailto:spurthi.gadamsetty@jpmchase.com); +912261573225. Grievance Officer: Ramprasadh K, [jpmipl.research.feedback@jpmorgan.com](mailto:jpmipl.research.feedback@jpmorgan.com); +912261573000.

Investment in securities market are subject to market risks. Read all the related documents carefully before investing. Registration granted by SEBI and certification from NISM in no way guarantee performance of the intermediary or provide any assurance of returns to investors.

**Indonesia:** PT J.P. Morgan Sekuritas Indonesia is a member of the Indonesia Stock Exchange and is registered and supervised by the Otoritas Jasa Keuangan (OJK). **Korea:** J.P. Morgan Securities (Far East) Limited, Seoul Branch, is a member of the Korea Exchange (KRX). JPMorgan Chase Bank, N.A., Seoul Branch, is licensed as a branch office of foreign bank (JPMorgan Chase Bank, N.A.) in Korea. Both entities are regulated by the Financial Services Commission (FSC) and the Financial Supervisory Service (FSS). For non-macro research material, the material is distributed in Korea by or through J.P. Morgan Securities (Far East) Limited, Seoul Branch. **Japan:** JPMorgan Securities Japan Co., Ltd. and JPMorgan Chase Bank, N.A., Tokyo Branch are regulated by the Financial Services Agency in Japan. **Malaysia:** This material is issued and distributed in Malaysia by JPMorgan Securities (Malaysia) Sdn Bhd (18146-X), which is a Participating Organization of Bursa Malaysia Berhad and holds a Capital Markets Services License issued by the Securities Commission in Malaysia. **Mexico:** J.P. Morgan Casa de Bolsa, S.A. de C.V. and J.P. Morgan Grupo Financiero are members of the Mexican Stock Exchange and are authorized to act as a broker dealer by the National Banking and Securities Exchange Commission. **New Zealand:** This material is issued and distributed by JPMSAL in New Zealand only to "wholesale clients" (as defined in the Financial Markets Conduct Act 2013). JPMSAL is registered as a Financial Service Provider under the Financial Service providers (Registration and Dispute Resolution) Act of 2008. **Philippines:** J.P. Morgan Securities Philippines Inc. is a Trading Participant of the Philippine Stock Exchange and a member of the Securities Clearing Corporation of the Philippines and the Securities Investor Protection Fund. It is regulated by the Securities and Exchange Commission. **Singapore:** This material is issued and distributed in Singapore by or through J.P. Morgan Securities Singapore Private Limited (JPMS) [MCI (P) 030/08/2023 and Co. Reg. No.: 199405335R], which is a member of the Singapore Exchange Securities Trading Limited, and/or JPMorgan Chase Bank, N.A., Singapore branch (JPMCB Singapore), both of which are regulated by the Monetary Authority of Singapore. This material is issued and distributed in Singapore only to accredited investors, expert investors and institutional investors, as defined in Section 4A of the Securities and Futures Act, Cap. 289 (SFA). This material is not intended to be issued or distributed to any retail investors or any other investors that do not fall into the classes of "accredited investors," "expert investors" or "institutional investors," as defined under Section 4A of the SFA. Recipients of this material in

Singapore are to contact JPMS or JPMCB Singapore in respect of any matters arising from, or in connection with, the material. **South Africa:** J.P. Morgan Equities South Africa Proprietary Limited and JPMorgan Chase Bank, N.A., Johannesburg Branch are members of the Johannesburg Securities Exchange and are regulated by the Financial Services Conduct Authority (FSCA). **Taiwan:** J.P. Morgan Securities (Taiwan) Limited is a participant of the Taiwan Stock Exchange (company-type) and regulated by the Taiwan Securities and Futures Bureau. Material relating to equity securities is issued and distributed in Taiwan by J.P. Morgan Securities (Taiwan) Limited, subject to the license scope and the applicable laws and the regulations in Taiwan. According to Paragraph 2, Article 7-1 of Operational Regulations Governing Securities Firms Recommending Trades in Securities to Customers (as amended or supplemented) and/or other applicable laws or regulations, please note that the recipient of this material is not permitted to engage in any activities in connection with the material that may give rise to conflicts of interests, unless otherwise disclosed in the "Important Disclosures" in this material. **Thailand:** This material is issued and distributed in Thailand by JPMorgan Securities (Thailand) Ltd., which is a member of the Stock Exchange of Thailand and is regulated by the Ministry of Finance and the Securities and Exchange Commission, and its registered address is 3rd Floor, 20 North Sathorn Road, Silom, Bangkok, Bangkok 10500. **UK:** Unless specified to the contrary, research is distributed in the UK by J.P. Morgan Securities plc ("JPMS plc") which is a member of the London Stock Exchange and is authorised by the Prudential Regulation Authority and regulated by the Financial Conduct Authority and the Prudential Regulation Authority. JPMS plc is registered in England & Wales No. 2711006, Registered Office 25 Bank Street, London, E14 5JP. This material is directed in the UK only to: (a) persons having professional experience in matters relating to investments falling within article 19(5) of the Financial Services and Markets Act 2000 (Financial Promotion) (Order) 2005 ("the FPO"); (b) persons outlined in article 49 of the FPO (high net worth companies, unincorporated associations or partnerships, the trustees of high value trusts, etc.); or (c) any persons to whom this communication may otherwise lawfully be made; all such persons being referred to as "UK relevant persons". This material must not be acted on or relied on by persons who are not UK relevant persons. Any investment or investment activity to which this material relates is only available to UK relevant persons and will be engaged in only with UK relevant persons. Research issued by JPMS plc has been prepared in accordance with JPMS plc's policy for prevention and avoidance of conflicts of interest related to the production of Research which can be found at the following link: [J.P. Morgan EMEA - Research Independence Policy](#). U.S.: J.P. Morgan Securities LLC ("JPMS") is a member of the NYSE, FINRA, SIPC, and the NFA. JPMorgan Chase Bank, N.A. is a member of the FDIC. Material published by non-U.S. affiliates is distributed in the U.S. by JPMS who accepts responsibility for its content.

**General:** Additional information is available upon request. The information in this material has been obtained from sources believed to be reliable. While all reasonable care has been taken to ensure that the facts stated in this material are accurate and that the forecasts, opinions and expectations contained herein are fair and reasonable, JPMorgan Chase & Co. or its affiliates and/or subsidiaries (collectively J.P. Morgan) make no representations or warranties whatsoever to the completeness or accuracy of the material provided, except with respect to any disclosures relative to J.P. Morgan and the Research Analyst's involvement with the issuer that is the subject of the material. Accordingly, no reliance should be placed on the accuracy, fairness or completeness of the information contained in this material. There may be certain discrepancies with data and/or limited content in this material as a result of calculations, adjustments, translations to different languages, and/or local regulatory restrictions, as applicable. These discrepancies should not impact the overall investment analysis, views and/or recommendations of the subject company(ies) that may be discussed in the material. J.P. Morgan accepts no liability whatsoever for any loss arising from any use of this material or its contents, and neither J.P. Morgan nor any of its respective directors, officers or employees, shall be in any way responsible for the contents hereof, apart from the liabilities and responsibilities that may be imposed on them by the relevant regulatory authority in the jurisdiction in question, or the regulatory regime thereunder. Opinions, forecasts or projections contained in this material represent J.P. Morgan's current opinions or judgment as of the date of the material only and are therefore subject to change without notice. Periodic updates may be provided on companies/industries based on company-specific developments or announcements, market conditions or any other publicly available information. There can be no assurance that future results or events will be consistent with any such opinions, forecasts or projections, which represent only one possible outcome. Furthermore, such opinions, forecasts or projections are subject to certain risks, uncertainties and assumptions that have not been verified, and future actual results or events could differ materially. The value of, or income from, any investments referred to in this material may fluctuate and/or be affected by changes in exchange rates. All pricing is indicative as of the close of market for the securities discussed, unless otherwise stated. Past performance is not indicative of future results. Accordingly, investors may receive back less than originally invested. This material is not intended as an offer or solicitation for the purchase or sale of any financial instrument. The opinions and recommendations herein do not take into account individual client circumstances, objectives, or needs and are not intended as recommendations of particular securities, financial instruments or strategies to particular clients. This material may include views on structured securities, options, futures and other derivatives. These are complex instruments, may involve a high degree of risk and may be appropriate investments only for sophisticated investors who are capable of understanding and assuming the risks involved. The recipients of this material must make their own independent decisions regarding any securities or financial instruments mentioned herein and should seek advice from such independent financial, legal, tax or other adviser as they deem necessary. J.P. Morgan may trade as a principal on the basis of the Research Analysts' views and research, and it may also engage in transactions for its own account or for its clients' accounts in a manner inconsistent with the views taken in this material, and J.P. Morgan is under no obligation to ensure that such other communication is brought to the attention of any recipient of this material. Others within J.P. Morgan, including Strategists, Sales staff and other Research Analysts, may take views that are inconsistent with those taken in this material. Employees of J.P. Morgan not involved in the preparation of this material may have investments in the securities (or derivatives of such securities) mentioned in this material and may trade them in ways different from those discussed in this material. This material is not an advertisement for or marketing of any issuer, its products or services, or its securities in any jurisdiction.

**Confidentiality and Security Notice:** This transmission may contain information that is privileged, confidential, legally privileged, and/or exempt from disclosure under applicable law. If you are not the intended recipient, you are hereby notified that any disclosure, copying, distribution, or use of the information contained herein (including any reliance thereon) is STRICTLY PROHIBITED. Although this transmission and any attachments are believed to be free of any virus or other defect that might affect any computer system into which it is

received and opened, it is the responsibility of the recipient to ensure that it is virus free and no responsibility is accepted by JPMorgan Chase & Co., its subsidiaries and affiliates, as applicable, for any loss or damage arising in any way from its use. If you received this transmission in error, please immediately contact the sender and destroy the material in its entirety, whether in electronic or hard copy format. This message is subject to electronic monitoring: <https://www.jpmorgan.com/disclosures/email>

**MSCI:** Certain information herein (“Information”) is reproduced by permission of MSCI Inc., its affiliates and information providers (“MSCI”) ©2024. No reproduction or dissemination of the Information is permitted without an appropriate license. MSCI MAKES NO EXPRESS OR IMPLIED WARRANTIES (INCLUDING MERCHANTABILITY OR FITNESS) AS TO THE INFORMATION AND DISCLAIMS ALL LIABILITY TO THE EXTENT PERMITTED BY LAW. No Information constitutes investment advice, except for any applicable Information from MSCI ESG Research. Subject also to [msci.com/disclaimer](https://www.msci.com/disclaimer)

Sustainalytics: Certain information, data, analyses and opinions contained herein are reproduced by permission of Sustainalytics and: (1) includes the proprietary information of Sustainalytics; (2) may not be copied or redistributed except as specifically authorized; (3) do not constitute investment advice nor an endorsement of any product or project; (4) are provided solely for informational purposes; and (5) are not warranted to be complete, accurate or timely. Sustainalytics is not responsible for any trading decisions, damages or other losses related to it or its use. The use of the data is subject to conditions available at <https://www.sustainalytics.com/legal-disclaimers>. ©2024 Sustainalytics. All Rights Reserved.

"Other Disclosures" last revised April 06, 2024.

---

**Copyright 2024 JPMorgan Chase & Co. All rights reserved. This material or any portion hereof may not be reprinted, sold or redistributed without the written consent of J.P. Morgan. It is strictly prohibited to use or share without prior written consent from J.P. Morgan any research material received from J.P. Morgan or an authorized third-party (“J.P. Morgan Data”) in any third-party artificial intelligence (“AI”) systems or models when such J.P. Morgan Data is accessible by a third-party. It is permissible to use J.P. Morgan Data for internal business purposes only in an AI system or model that protects the confidentiality of J.P. Morgan Data so as to prevent any and all access to or use of such J.P. Morgan Data by any third-party.**

Completed 03 Jul 2024 09:10 PM BST

Disseminated 03 Jul 2024 09:10 PM BST